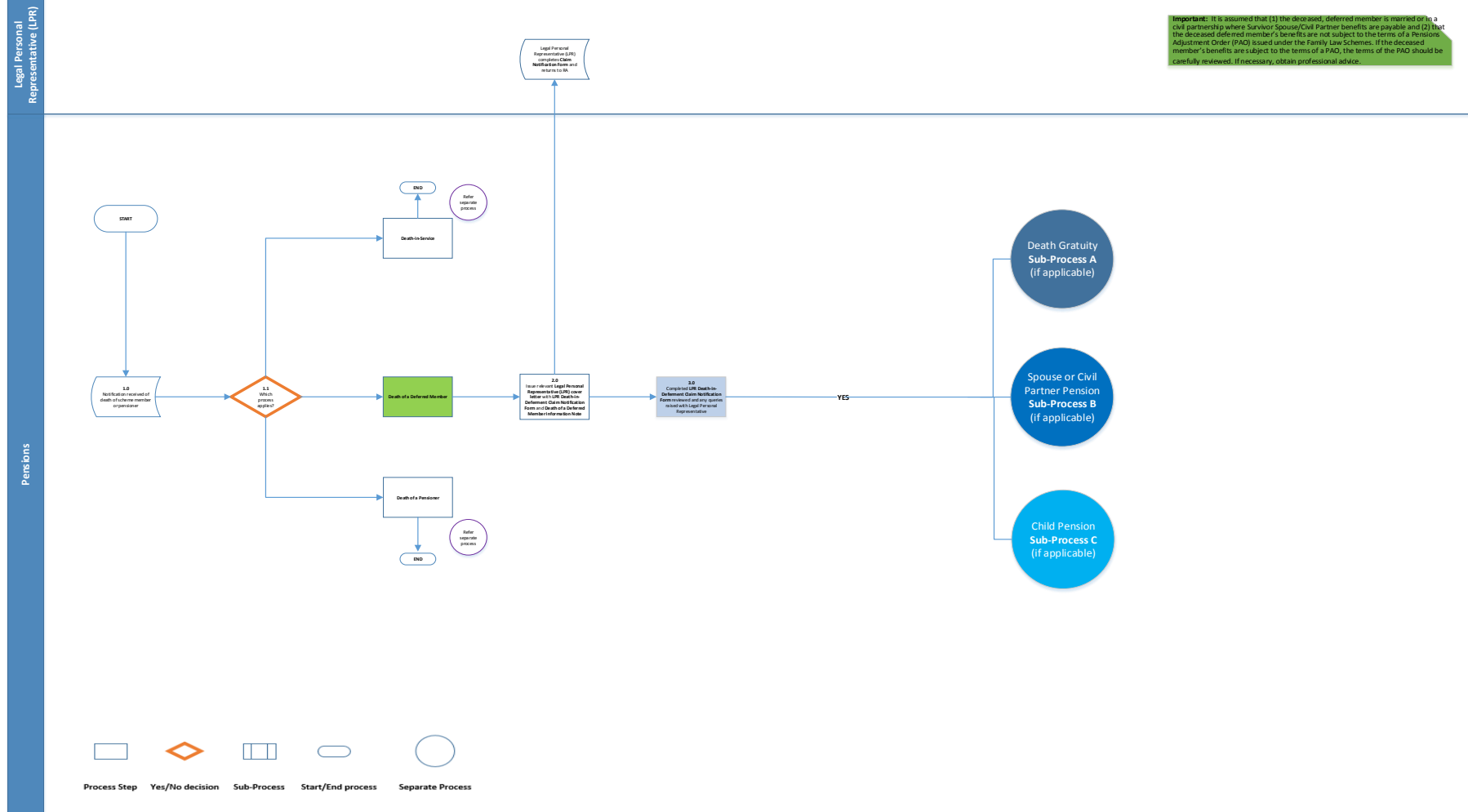


Single Scheme – Death of Deferred Member – Steps Following Notification of Death

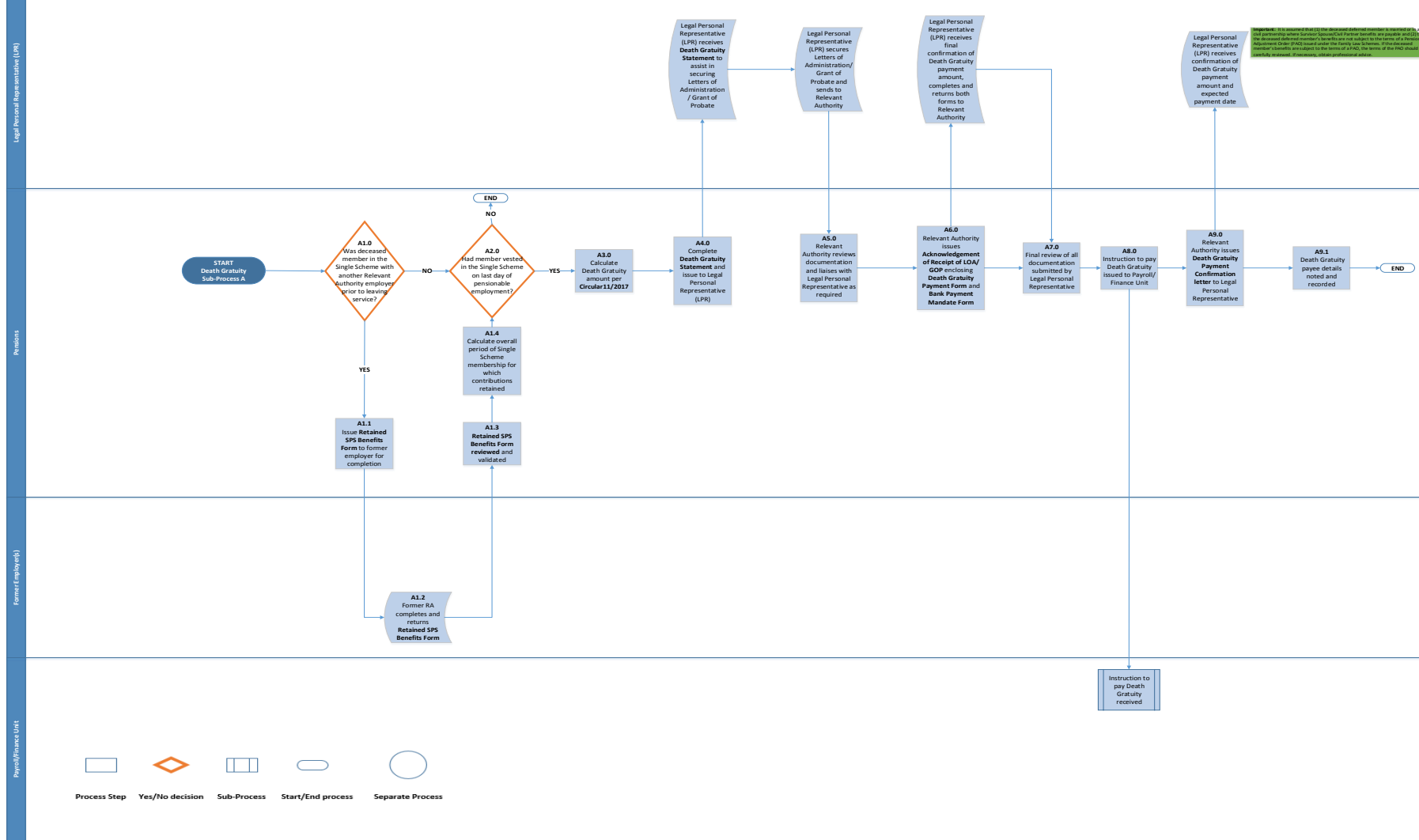
SPS.DEA.DOD.PM.01 (Phase 1)



Single Scheme – Death of a Deferred Member – A. Processing of Death Gratuity

SSAP – Phase 1

SPS_DEA_DOD_PM02 (Phase 1)



Title
Reference
Version Control

Single Scheme Administration Project – Death of a Deferred Member – B. Processing of a Spouse/Civil Partner Pension
SPS.DTH.DOD.PM.03 (Phase 1)
V1.0

Single Scheme – Death of a Deferred Member– B. Processing of a Spouse/Civil Partner Pension

SSAP – Phase 1

SPS.DEA.DOD.PM.03 (Phase 1)

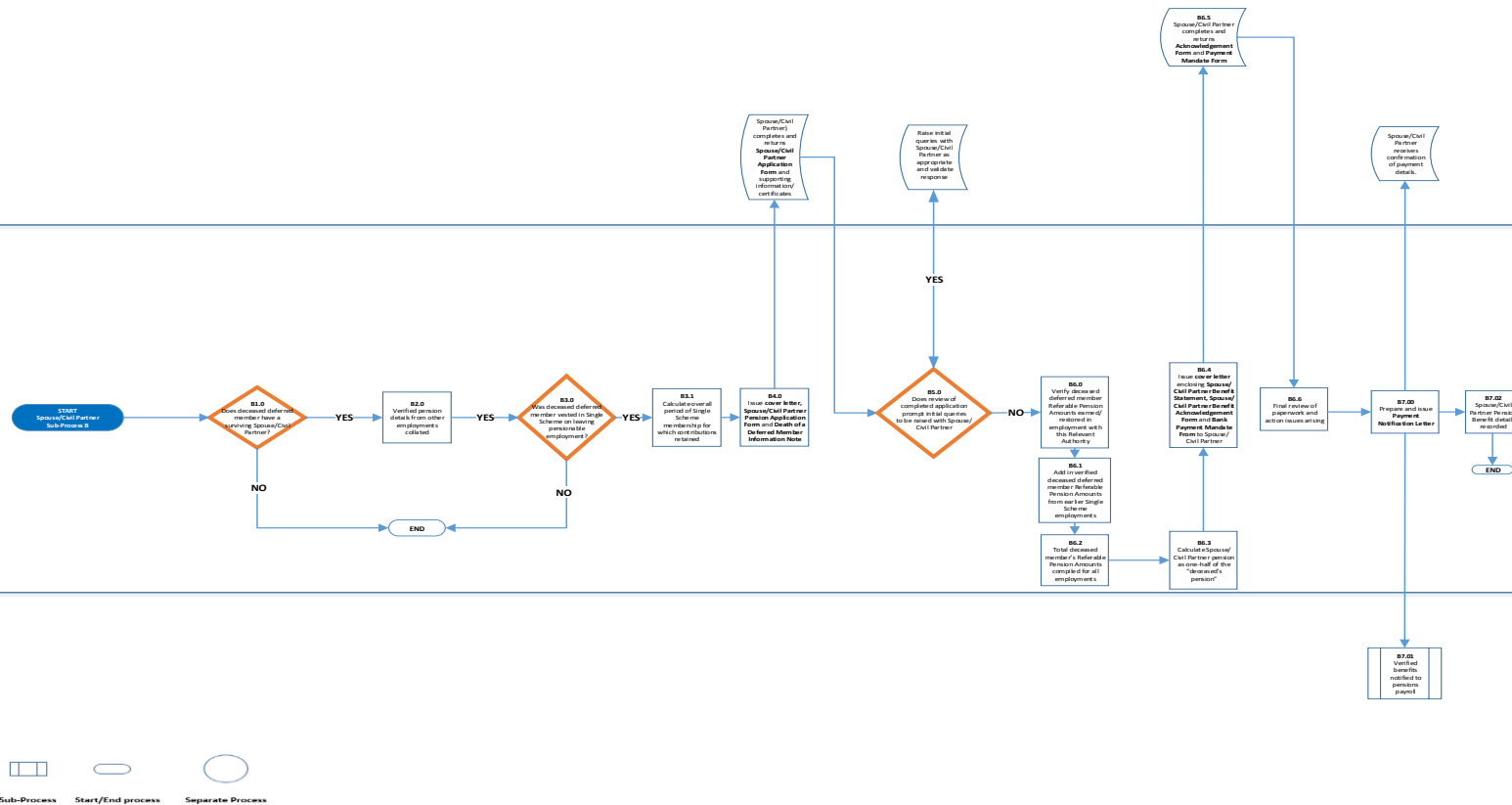
Important: It is assumed that (1) the deceased deferred member is married or in a civil partnership where Survivor Spouse/Civil Partner benefits are payable and (2) that the deceased deferred member's benefits are not subject to the terms of a PAGO. If the deceased member's benefits are subject to the terms of a PAGO, the terms of the PAGO should be carefully reviewed. If necessary, obtain professional advice.

Former Employer

Spouse/Civil Partner

Pensions

Payroll/Finance Unit



Title
Reference
Version Control

Single Scheme Administration Project – Death of a Deferred Member– C. Processing of a Child Pension
SPS.DTH.DOD.PM.04 (Phase 1)
V1.0

Single Scheme – Death of a Deferred Member – C. Processing of a Child Pension

SSAP – Phase 1

SPS.DEA.DOD.PM.04 (Phase 1)

Former Employer

Parent/Step-parent/
Legal Guardian/Child
applicant (18 or over)

Pensions

Payroll/Finance Unit

